

Double Glaze Matters

MAY 2014

Alan Cuthbertson

alan@diydoubleglaze.com.au

*Montmorency Food
Swap
Sun 1st June,
10:30—11:30*

*Montmorency Primary
School*

*Bring your home grown
produce to swap.*

Turtle walk to Canberra

Several months ago I talked about an Angel walk to Canberra. Well, its still happening, but it has changed into a "Turtle Walk to Canberra".

I couldn't get my angels to be involved, but I now have a couple of turtles to take with me.

I have also got a co walker to travel with me. She is a 72 year old veteran of long distance walks. She walked 1,300 km in support of the Great Barrier reef. Her website is: www.reefwalk2013.com

The date has been firmed up for leaving Melbourne on Saturday September 27th, arriving in Canberra on Monday 27th November.



Our "reason" for the walk is to take a petition to the parliament requesting real action on Climate Change plus a detailed a plan of action . On the way we will stay with environment groups and help spread the message.

Continued over page



Franciscus Henri's contribution!

Turtle walk to Canberra (cont)

The total distance is 620 km and we will be covering around 25 km a day. It will be done as a relay with at least 2 people walking at a time, so walkers only have to cover 10 km a day. But if they feel fit, they can walk the whole distance!

The first day will be only 17 km walking from parliament house to Heidelberg. Hopefully we can organise some entertainment before we depart and some food at the end of the day. I would love people to join us, especially on the first day. If nothing else, it should be a great walk along the Yarra Trail.

If you want to join us for a day, a week or a month, please get back to me. Also, if you know of anyone between here and Canberra that would be able to provide a bed or two for the night, please get them to contact me.

I am in the process of putting a web site together, but more of that in the future!

Are wood fires bad?

On initial examination you would think that burning wood is bad. It creates CO₂ and therefore contributes to Climate Change. If we chopped down all the trees in the world and burnt them, the increase in CO₂ would be dramatic.

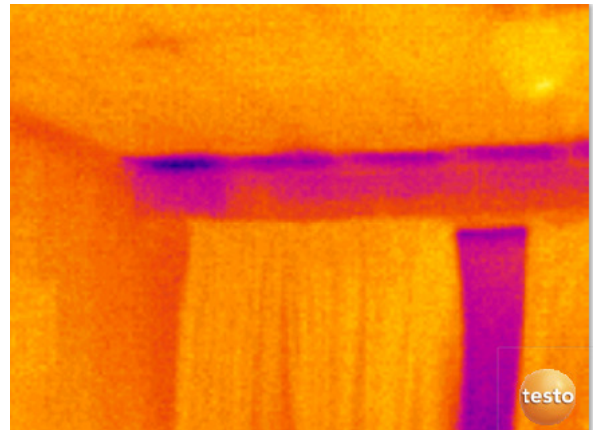
But further examination of this shows it is not necessarily bad. When a tree dies the wood eventually rots and most of the carbon in the tree is converted to CO₂— exactly the same amount of CO₂ that comes from burning it. Of course some of it may get buried and start the process of being converted to coal, but that is only a very small amount.

So, burning dead wood doesn't increase the release of CO₂ into the air, it just speeds it up. It happens very quickly, rather than over 10 years, but the end result is the same.

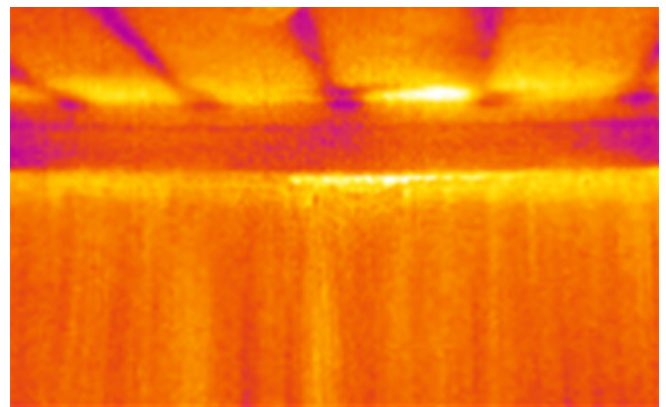
If you are still concerned, plant a replace-

Fixing my Insulation— Update

Last month I talked about the thermal camera and how it had helped find holes in my insulation, mainly where the walls met the ceiling. I worked on the bedroom this month and the difference is dramatic! Before the corners were colder than the rafters, now the rafters are colder than the corners.



**Before -Cold spots above
the window**



After -Cold spots gone

ment tree The new tree will capture the CO₂ and convert it to wood. So, you have effectively converted dead wood that will rot into new wood that will last for years.

This argument is strengthened if the burning of the wood means that you use less gas or coal generated electricity.

So, if you like your wood fire, don't feel guilty, just make sure that the wood you are burning is being replaced.